

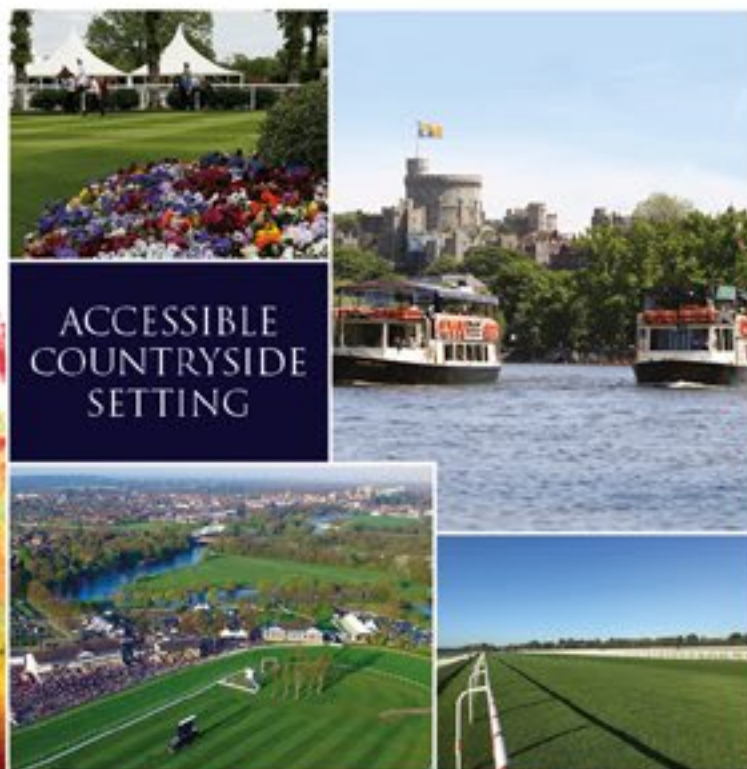


ROYAL WINDSOR  
RACECOURSE

CONFERENCE & EVENTS



# MORE THAN JUST A RACECOURSE



AWARD  
WINNING





# YOUR VENUE, YOUR EVENT

## WEDDINGS

- Unique venue and offering
- Option to arrive by boat to our island
- Amazing outdoor photo opportunities to remember the day

## PRIVATE CELEBRATION EVENTS

- Variety of packages to suit all needs
- Bespoke and tailor-made options available
- External catering hire offered

## OUTDOOR EVENTS

- Access to amenities e.g. power & water
- Bespoke tailoring to event requirements

## FAIRS & FESTIVALS

- Indoor and outdoor options on site
- Outdoor music license until 10.30pm
- Ample complimentary parking



## FILMING

- Accessible hard standing for large unit base
- Traditional Victorian Grandstand perfect for period dramas
- Variety of indoor and outdoor suites for all requirements

## TEAM BUILDING

- 165 acres perfect for outdoor activities
- Access to river for boating activities
- Wet weather cover options available

## CORPORATE CELEBRATIONS

- Versatile outdoor space
- Variety of cuisine options available
- Ability to accommodate large scale or intimate events

## CONFERENCE & MEETINGS

- All suites provide natural daylight
- Pillar free space
- Amazing panoramic views





# ACCESSIBLE COUNTRYSIDE SETTING

---

## BY AIR

- Under 10 miles from Heathrow Airport
- Helipad located on site

## BY AUTOMOBILE

- 2 miles from the M4
- Over 2,000 free car parking spaces
- 1 hour from London

## WALKING

- 1.5 miles from Windsor town centre

## BY BOAT

A river taxi service operates from Barry Avenue Promenade, opposite Browns restaurant, in Windsor town centre. This is just a short walk from both Windsor train stations. The river trip takes approximately 10 minutes and there is a full bar facility on board. *Must be requested prior to event and pre-booking is required.*

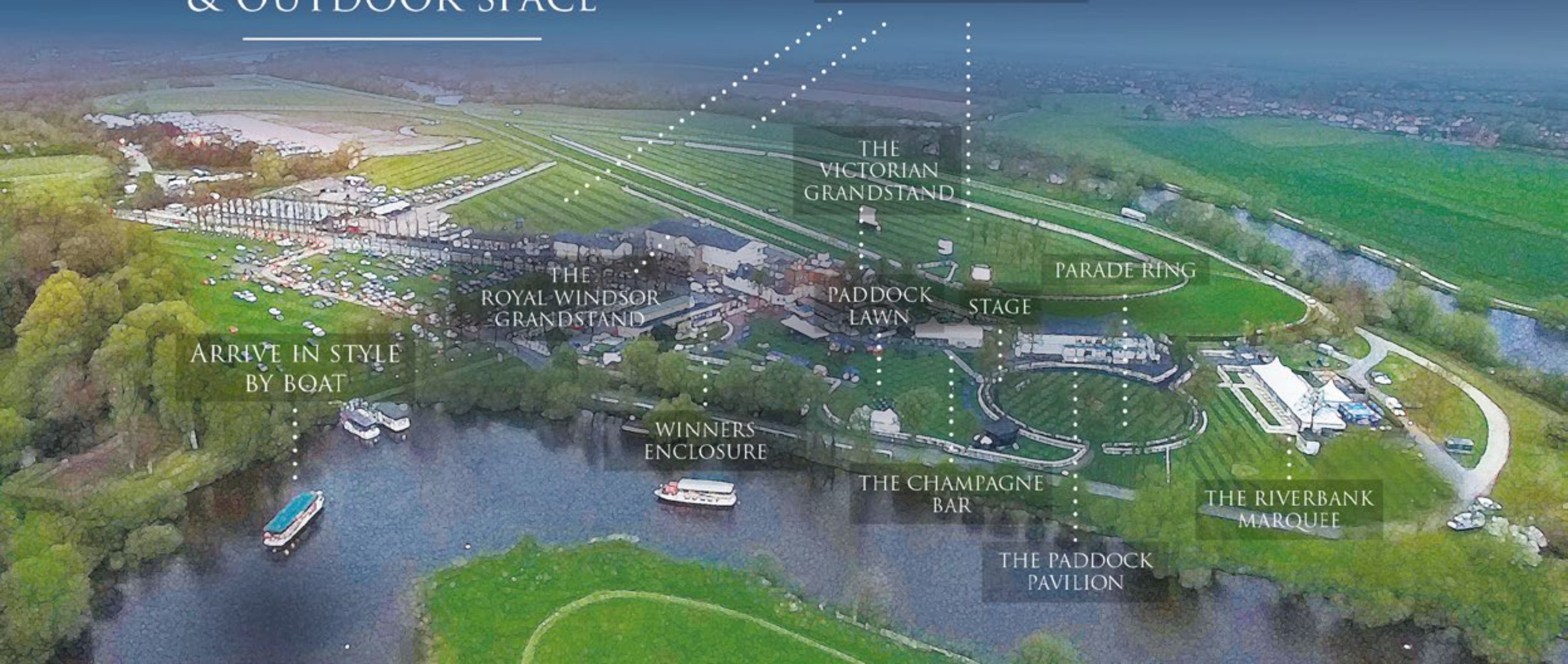
## BY TRAIN

- 3 train stations located within 4 miles
- Windsor & Eton Central
  - Windsor Riverside
  - Slough



# VERSATILE & UNIQUE INDOOR & OUTDOOR SPACE

165 ACRES OF  
OUTDOOR SPACE



THE  
VICTORIAN  
GRANDSTAND

THE  
ROYAL WINDSOR  
GRANDSTAND

PADDOCK  
LAWN

STAGE

PARADE RING

ARRIVE IN STYLE  
BY BOAT

WINNERS  
ENCLOSURE

THE CHAMPAGNE  
BAR

THE PADDOCK  
PAVILION

THE RIVERBANK  
MARQUEE



IDEAL FOR SEMINARS,  
CONFERENCES AND  
PRIVATE DINING  
EVENTS

### ROOM DIMENSIONS

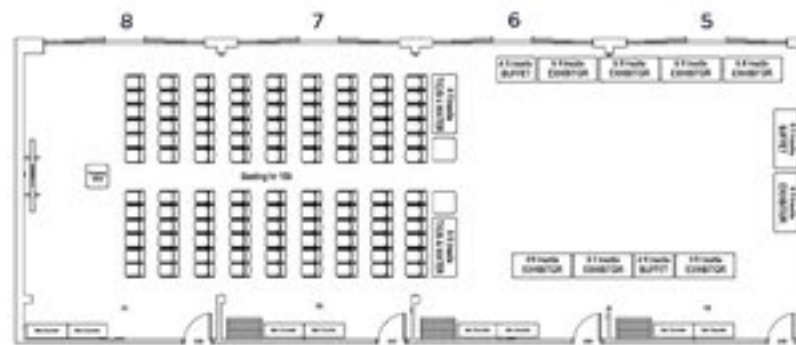
Room	Length	Width	Height
1 <sup>st</sup> Floor			
1866 Restaurant	22	9	2.6
Individual Suite GS 1 & 2	12	9	2.6 / 2.3
1866 Suite (Whole floor)	34	9	2.6
2 <sup>nd</sup> Floor			
Individual Suite GS 3	5	5.8	2.3
Individual Suite GS 4,5,6,7,8	6	9	2.3
Royal Suite (Whole floor)	36	9	2.3

All measurements are in metres.

Contact us now to make a booking  
01753 498400  
events@windsor-racecourse.co.uk

## THE ROYAL WINDSOR GRANDSTAND

The Grandstand boxes and suites provide stunning views of the beautiful Berkshire countryside and benefit from full length balcony views across the prestigious racecourse. With a capacity of up to 280 theatre and 180 dinner dance, the Grandstand is blessed with many flexible spaces that can cater for a wide array of events and occasions.



Example floor plan - Grandstand suites 5-8

- 108 seated theatre style with AV & exhibitor and catering area.

### ROOM CAPACITIES

Room	Banquet	Dinner dance	Informal receptions	Theatre	Classroom	Boardroom	U Shape	Cabaret
1 <sup>st</sup> Floor								
1866 Restaurant	110	80	110	144	72	N/A	39	72
Individual Suite GS 1 & 2	60	32	50	60	42	26	32	40
1866 Suite (Whole floor)	220	180	250	280	90	N/A	N/A	128
2 <sup>nd</sup> Floor								
Individual Suite GS 3	10	N/A	N/A	20	8	6	N/A	N/A
Individual Suite GS 4,5,6,7,8	30	N/A	40	40	20	20	16	16
Royal Suite (Whole floor)	190	170	250	276	99	N/A	N/A	120
*These are all recommended capacities (banquet and dinner dances based on tables of 10). Please contact the sales team for maximum capacities								





# THE VICTORIAN GRANDSTAND

The most historic part of the racecourse going back to the Victorian era, this quintessentially British building offers traditional space for small meetings, accommodating for up to 12 boardroom. If you're looking for something different and want to experience a taste of what it was like when Sir Winston Churchill watched his horses race, then this really is the place for you. Finish the day in style in the Princes Head Pub, with friends and colleagues, where you can sit back and relax with a drink in hand. Gastro@Royal Windsor, our unique steakhouse restaurant is also available for hire, where you can expect to be served mouth-watering cuts of steak within a beautiful dining space.

# Gastro

ROYAL WINDSOR  
- STEAKHOUSE -

IDEAL FOR INTIMATE  
MEETINGS, PRIVATE  
DINING AND AFTER  
CONFERENCE DINNER  
AND DRINKS



Contact us now to make a booking  
01753 498400  
[events@windsor-racecourse.co.uk](mailto:events@windsor-racecourse.co.uk)



## THE PADDOCK LAWN

The famous Paddock Lawn and Marquee offers versatile space for both indoor and outdoor activities for groups of all sizes. This area is perfect for family fun days, special events and even roadshows and product launches.



IDEAL FOR FAMILY FUN  
DAYS, MUSIC FESTIVALS  
AND TEAM BUILDING  
EVENTS

Contact us now to make a booking  
01753 498400  
[events@windsor-racecourse.co.uk](mailto:events@windsor-racecourse.co.uk)



IDEAL FOR SEMINARS,  
PRIVATE DINING AND  
INTIMATE EVENTS

### ROOM DIMENSIONS

Room	Length	Width	Height
<b>1<sup>st</sup> Floor</b>			
Individual Suite 1 & 2	6	5	2.3
Double Suite 1 & 2	12	5	2.3
Individual Suite 3 & 4	6	4	2.3
Double Suite 3 & 4	12	4	2.3
Owners and Trainers Lounge	9.8 + 7	9 + 9.8	2.3
<b>2<sup>nd</sup> Floor</b>			
Individual Suite 7 & 8	6	5	2.3
Individual Suite 9 & 10	6	6.8	2.3
Individual Suite 11 & 12	6	6.7	2.3

All measurements are in metres.

Contact us now to make a booking  
01753 498400  
[events@windsor-racecourse.co.uk](mailto:events@windsor-racecourse.co.uk)

## THE PADDOCK PAVILION

Set just beyond the finishing line, these 10 boxes with a self contained business lounge offer head on views not only of the track, but over the stunning 165 acres of countryside.

With a range of sizes and capacities, and the flexibility to accommodate smaller groups, the Paddock Pavilion can cater for up to 26 boardroom and 40 theatre with additional syndicate rooms available if required.



Example floor plan - Suites 3 - 4

- 42 seated theatre style with AV.

## ROOM CAPACITIES

Room	Banquet	Dinner dinner	Informal receptions	Theatre	Classroom	Boardroom	U Shape	Cabaret
<b>1<sup>st</sup> Floor</b>								
Double Suite 1 & 2	50	40	50	40	32	26	30	40
Individual Suite 3 & 4	20	N/A	N/A	14	6	14	N/A	8
Double Suite 3 & 4	40	N/A	50	30	24	20	21	32
Owners and Trainers Lounge	N/A	N/A	60	N/A	N/A	N/A	N/A	N/A
<b>2<sup>nd</sup> Floor</b>								
Individual Suite 7, 8, & 11	20	N/A	N/A	14	6	14	11	8
Individual Suite 9 & 10	N/A	N/A	N/A	14	6	14	11	8
Individual Suite 12	20	N/A	N/A	14	6	14	11	8

\*These are all recommended capacities (banquet and dinner dances based on tables of 10). Please contact the sales team for maximum capacities



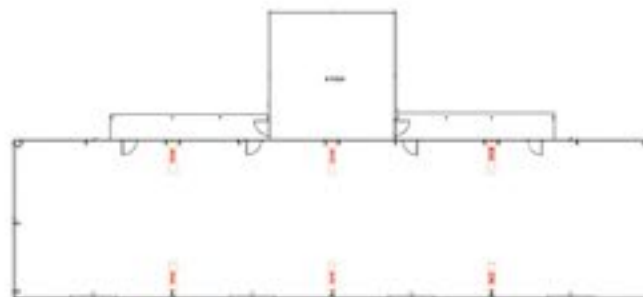


IDEAL FOR WEDDINGS,  
PRIVATE PARTIES &  
SUMMER BBQs

#### ROOM DIMENSIONS

Room	Length	Width	Height
Riverbank Marquee	39	9	2.4

All measurements are in metres.



Blank floor plan showing individual pods and beam locations.

## THE RIVERBANK MARQUEE

The Riverbank Marquee located behind the Parade Ring is the ideal venue for not only weddings, but also the perfect setting for family fun days and summer BBQs. Set within its own garden of manicured lawns and patio area, this versatile space can adapt to cater for both large and smaller scale events with a maximum capacity of 350 for informal receptions and 300 banquet.

#### ROOM CAPACITIES

Room	Banquet	Dinner dance	Informal receptions	Theatre	Cabaret
Riverbank Marquee	300	220	350	348	164
*These are all recommended capacities (banquet and dinner dances based on tables of 10). Please contact the sales team for maximum capacities					



Contact us now to make a booking  
01753 498400  
[events@windsor-racecourse.co.uk](mailto:events@windsor-racecourse.co.uk)



## 165 ACRES OF OUTDOOR SPACE

With extensive grass and hard standing areas that are licensed for entertainment, food and beverages, this venue is large enough to cater for concerts, festivals and charity events during the warm summer months, and spectacular winter wonderlands and firework displays in the winter months. Its popularity with location managers and film crews alike, has put the racecourse firmly on the map as a desired filming location. The ability to provide bespoke services, access to amenities (including power and water) coupled with an experienced support team, means each and every need is fully understood and achieved.



IDEAL FOR ANY  
OUTDOOR EVENT



Contact us now to make a booking  
01753 498400  
[events@windsor-racecourse.co.uk](mailto:events@windsor-racecourse.co.uk)



# TANTALISING CUISINE

“Our aim is simple. To offer a welcoming and vibrant environment in which to enjoy an array of delectable dishes with products sourced from local suppliers, showcasing the very best seasonal produce tailored to your event requirements.”

HEAD CHEF, DARRAN KIMBER







## “BESPOKE PACKAGES

At Royal Windsor Racecourse we understand that no two events are alike. If you're planning an event, the chances are, you won't find the perfect package listed on a website or in a brochure. Therefore our team of experienced experts will work closely with you to understand your needs and specific requirements before designing a package to suit you. No request is too big or too small, so whether you're after something simple and straightforward or extravagant and niche, we're sure we can deliver something that is tailored to your event to ensure all of your guests leave with a smile! ”

...ENDLESS POSSIBILITIES



## TESTIMONIALS



"On behalf of Windsor Lions I would like to say how delighted we were with our Black Tie Ball in the Riverbank Marquee recently.

The staff were a pleasure to deal with, food was delicious and all the facilities on site worked very well. Everyone was very happy to go the extra mile to help make the event go smoothly on the night and we, and our guests, were delighted with the result."



"Thames Valley Air Ambulance were delighted to hold their first Charity Race Night at Windsor Racecourse in May 2017. With an appearance from the helicopter and crew, this was a fabulous opportunity to showcase the work the charity does, along with a fabulous night of fundraising for our supporters and other racegoers. With a charity auction, raffle, race sponsorship & hospitality, the event raised vital funds and this could not have been achieved without the hugely professional team at Windsor. We would highly recommend holding a race day, and are already busy organising our next event."

## RICOH

"I was responsible for organising our "Half Year Kick Off Event" for our department whereby an afternoon at the races had been suggested. We were looking for a location where we could combine a short conference before breaking out and unwinding for the afternoon - a chance for the team to interact away from the office in a relaxed environment. The function room itself served our purpose well. We had our own room with private bar and balcony with fab views of the racecourse. We were able to have our conference in the room before the racing began. We then had a buffet lunch served to our room. The staff were all very helpful, friendly and efficient, and everything went to plan without a hitch. I express big thanks to everybody at the racecourse that helped in making this meeting a success."



## HOW TO FIND US

### By Road

Royal Windsor Racecourse is on the A308 between Windsor and Maidenhead. From the M4 leave at J6 and follow the signs to Windsor. From the M3 leave at J2 and join the M25. From the M25 J15 join the M4 to J6 and follow signs to Windsor Racecourse.

Sat Nav: SL4 5EZ

### By Rail

The nearest stations to the racecourse are Windsor & Eton Central, Windsor & Eton Riverside and Slough. Trains run from Paddington and Waterloo to these stations. Taxis are available from all stations.

### By Air

Helicopters may land on the centre course (by prior arrangement with the racecourse).

### By River

A river taxi service operates from Barry Avenue Promenade, opposite Browns restaurant, in Windsor town centre. This is just a short walk from both Windsor train stations. The river trip takes approximately 10 minutes and there is a full bar facility on board.

Must be requested prior to event and pre-booking is required.

**Royal Windsor Racecourse, Maidenhead Road, Windsor, Berkshire**



T: 01753 498400 [WINDSOR-RACECOURSE.CO.UK](http://WINDSOR-RACECOURSE.CO.UK)



Part of the ARC Group



[www.windsor-racecourse.co.uk](http://www.windsor-racecourse.co.uk)

Royal Windsor Racecourse, Maidenhead Road, Windsor, Berkshire SL4 5JJ

T: 01753 498400 E: [office@windsor-racecourse.co.uk](mailto:office@windsor-racecourse.co.uk)

The information contained in this brochure is for general guidance only. The photographs shown are not necessarily representative in every respect. The Company reserves the right to alter these details at any time and without prior notice. Fixture dates, themes, packages and prices are correct at the time of going to print and are subject to change. All maps are for general guidance only.

Brochure designed by The Visual Safari Design Group